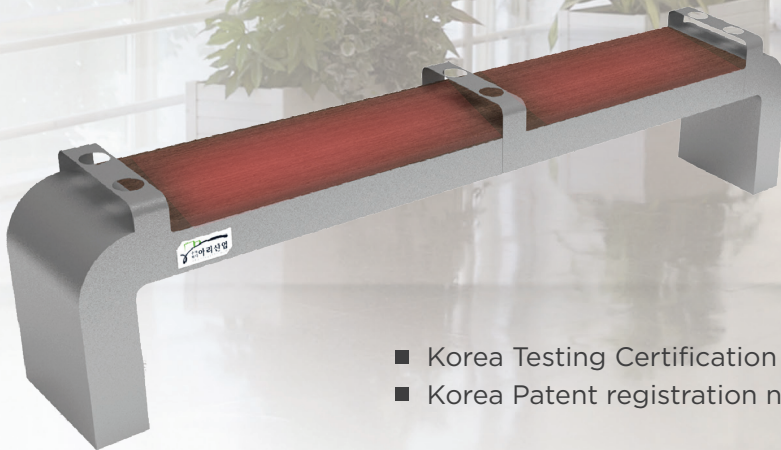


HEATER BENCH

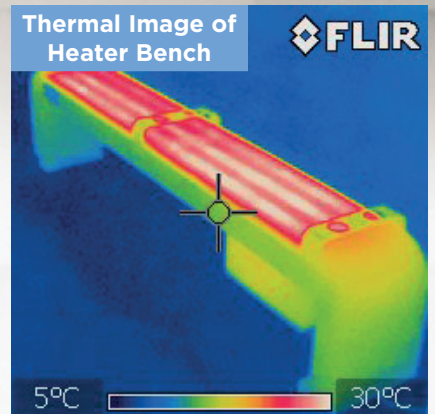
Our brilliantly designed heater bench from Korea is manufactured with embedded heating elements and self-regulating temperature functions which provides optimal warmth.

The robust metal body and smooth wooden finished surface compliments the contemporary design. Each bench has handy cup holders to allow users to enjoy a cup of warm drink while seated down.



- Korea Testing Certification no. XJ070015-15001A
- Korea Patent registration no. 10-1548151

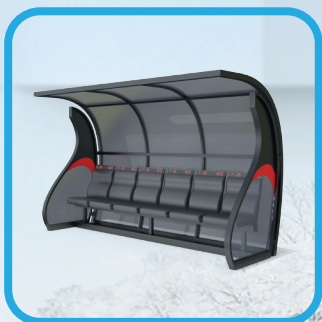
Dimensions	2.5 (L) x 0.5 (H) x 0.5 (W) m
Power Input	220 VAC, 60 Hz / 120 VAC, 60 Hz
Power Output	24 VDC / 8.8 A, 300 W
Power Controller	5 VDC / 1.0 A, 5 W
Heated Surface Temperature	38 - 42 °C
Electrical Power Consumption	230 Wh
Electrical Power Consumption (10 h)	2.3 KW
Operating Mode	Switch on at 5°C Switch off at 7°C





Winters do not have to be cold anymore.

Stylish
Outdoor & Indoor
Designs



Elegantly
Crafted



Green
Solutions



Built to Last